

# OLIVE TREE - PARCEL 5D

BEING A REPLAT OF A PORTION OF OLIVE TREE - PHASE 5A/6B  
OF THE RIVER BRIDGE P.U.D., (P.B. 76, PGS. 102 - 104)

LYING IN SECTION 10, TOWNSHIP 44 SOUTH, RANGE 42 EAST  
CITY OF GREENACRES, PALM BEACH COUNTY, FLORIDA.

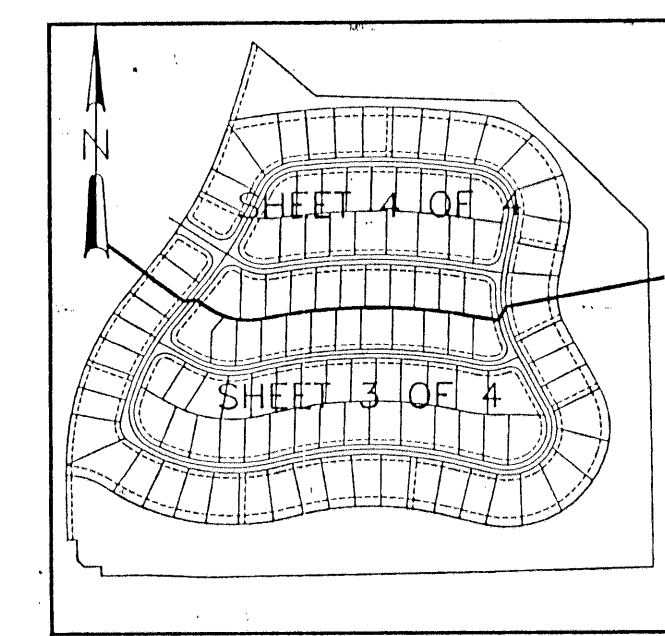
JANUARY 1996

SHEET 3 OF 4

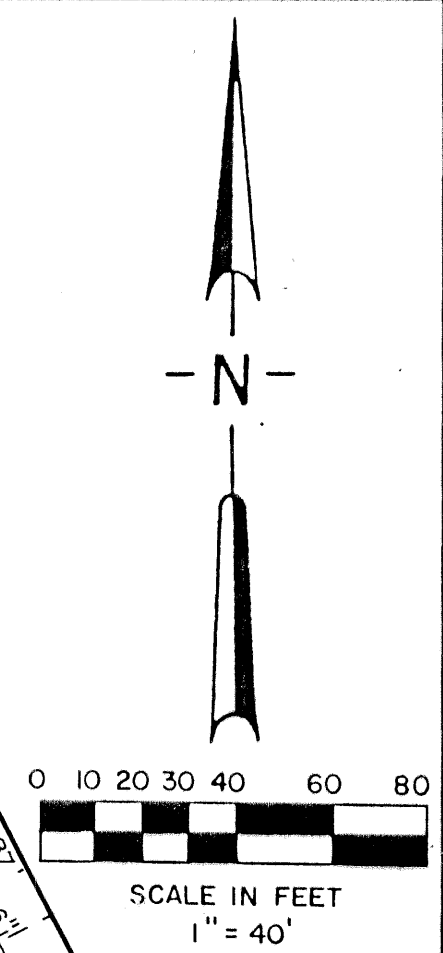
# 129

STATE OF FLORIDA  
COUNTY OF PALM BEACH  
This plat was filed for record at \_\_\_\_\_, this day of \_\_\_\_\_, 1996, and duly recorded in Plat Book No. \_\_\_\_\_ on Pages \_\_\_\_\_ thru \_\_\_\_\_.

DOROTHY H. WILKEN  
Clerk Circuit Court

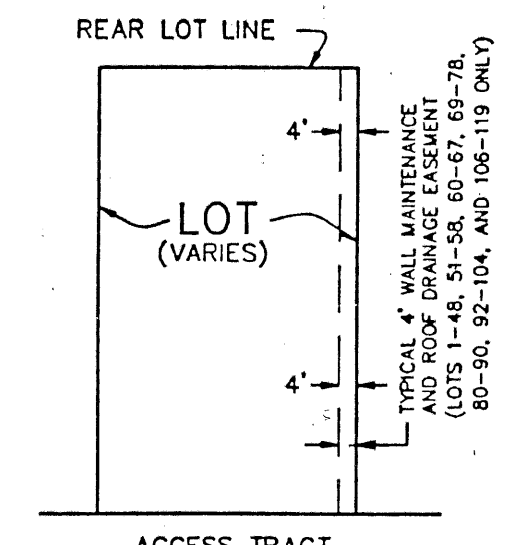
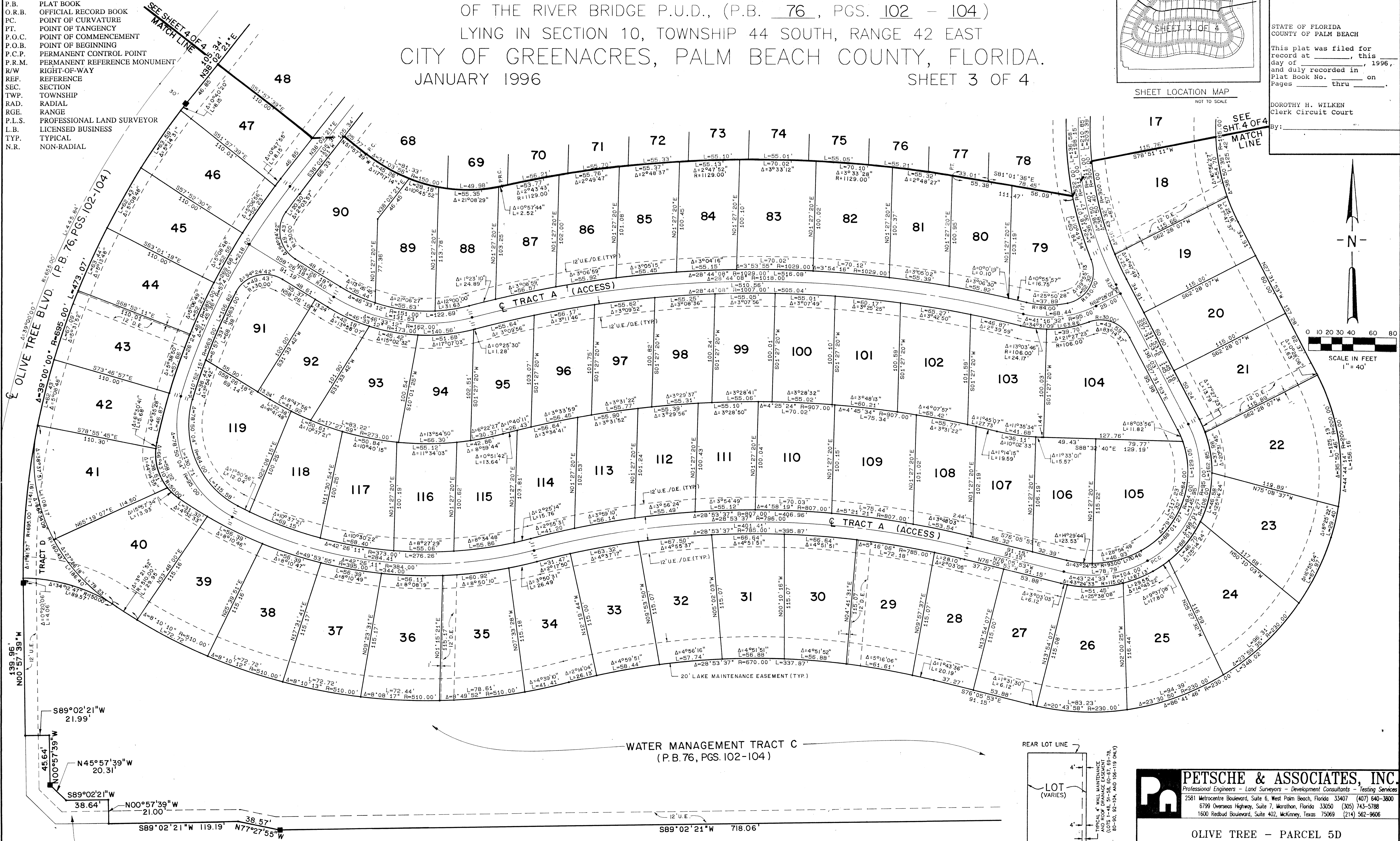


SHEET LOCATION MAP  
NOT TO SCALE



SCALE IN FEET  
1" = 40'

- LEGEND**
- D.E. DRAINAGE EASEMENT
  - U.E. UTILITY EASEMENT
  - P.B. PLAT BOOK
  - O.R.B. OFFICIAL RECORD BOOK
  - P.C. POINT OF CURVATURE
  - P.T. POINT OF TANGENCY
  - P.O.C. POINT OF COMMENCEMENT
  - P.O.B. POINT OF BEGINNING
  - P.C.P. PERMANENT CONTROL POINT
  - P.R.M. PERMANENT REFERENCE MONUMENT
  - R/W. RIGHT-OF-WAY
  - REF. REFERENCE
  - SEC. SECTION
  - TWP. TOWNSHIP
  - RAD. RADIAL
  - RGE. RANGE
  - P.L.S. PROFESSIONAL LAND SURVEYOR
  - L.B. LICENSED BUSINESS
  - TYP. TYPICAL
  - N.R. NON-RADIAL



TYPICAL LOT DETAIL  
NOT TO SCALE  
4' WALL MAINTENANCE AND ROOF DRAINAGE EASEMENT (SEE DEDICATION # 6)

**PETSCHÉ & ASSOCIATES, INC.**  
Professional Engineers - Land Surveyors - Development Consultants - Testing Services  
2581 Metrocentre Boulevard, Suite 6, West Palm Beach, Florida 33407 (407) 640-3800  
6799 Overseas Highway, Suite 7, Marathon, Florida 33050 (305) 743-5788  
1600 Reudub Boulevard, Suite 402, McKinney, Texas 75069 (214) 562-9606

OLIVE TREE - PARCEL 5D

SECTION 10, TOWNSHIP 44S., RANGE 42E.  
CITY OF GREENACRES, FLORIDA

Drawn by:	Date:	SCALE:	JOB NUMBER:	SHEET	OF
Designed by:	Checked by:	1" = 40'	95-052	3	4